



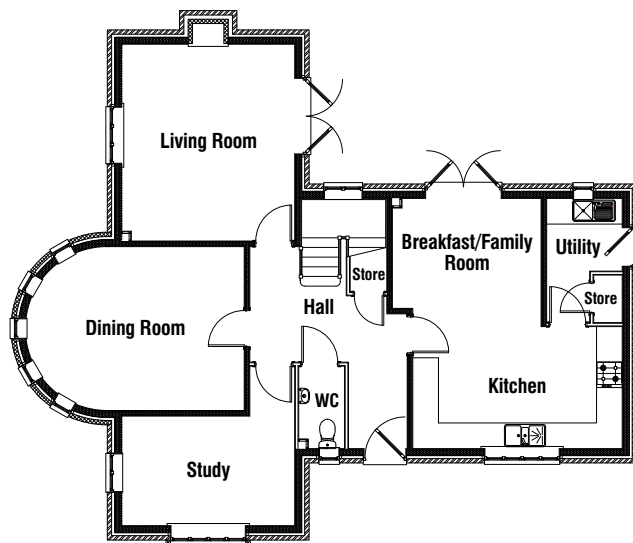
Solar panels

Solar photovoltaic (PV) panels are fitted as standard on selected Larkfleet properties. Please ask your sales advisor to confirm if solar panels are fitted to the property on the plot number you are interested in.

Plot numbers

Please refer to the development brochure for confirmation of the plot numbers for this particular house type.

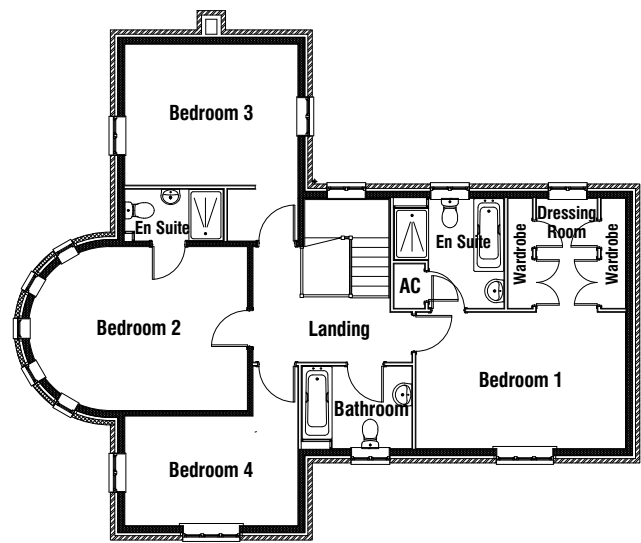
External wall finishes may vary from plot to plot or development to development. Please ask your sales advisor to confirm if the property you are interested in has a brick, stone or rendered external wall finish.



Ground floor

Living Room	4.04m x 4.59m	13'3" x 15'1"
Dining Room	5.11m x 3.82m	16'9" x 12'7"
Breakfast/Family Room	3.47m x 2.99m	11'5" x 9'10"
Kitchen	4.89m x 2.85m	16'1" x 9'4"
Study	4.04m x 2.56m	13'3" x 8'5"
Utility Room	1.76m x 2.90m	5'10" x 9'6"

All measurements shown are approximate maximum room dimensions.



First floor

Bedroom 1	4.89m x 3.18m	16'1" x 10'5"
En Suite	2.59m x 2.50m	8'6" x 8'2"
Bedroom 2	5.11m x 3.82m	16'9" x 12'7"
En Suite	2.33m x 1.24m	7'8" x 4'1"
Bedroom 3	4.04m x 3.29m	13'3" x 10'10"
Bedroom 4	4.04m x 2.56m	13'3" x 8'5"
Bathroom	2.60m x 1.95m	8'6" x 6'5"

Depending on plot number, the floor plans for this house type may be opposite to those shown above.

Every care has been taken to ensure the accuracy of these particulars but the contents shall not form part of any contract and the vendors reserve the right to alter specification and/or design without notice. Landscaping shown is for illustration purposes only.