

Kenilworth

INNOVATION • QUALITY • SUSTAINABILITY

Four bedroom house



Solar panels

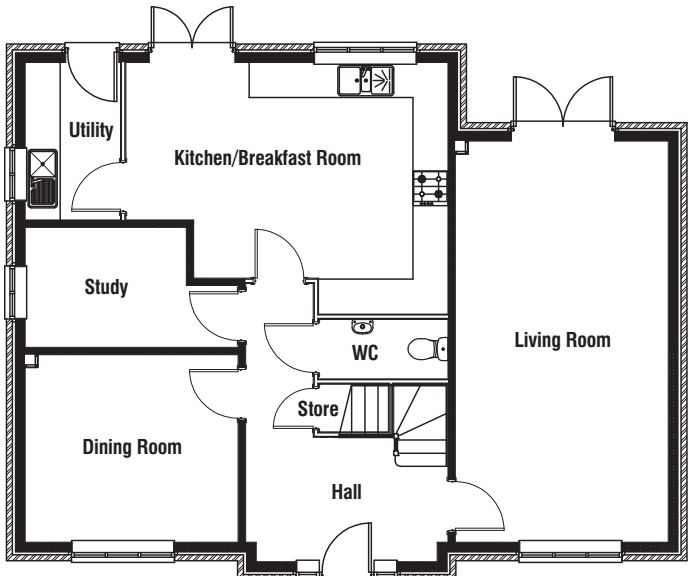
Solar photovoltaic (PV) panels are fitted as standard on selected Larkfleet properties. Please ask your sales advisor to confirm if solar panels are fitted to the property on the plot number you are interested in.

Plot numbers

Please refer to the development brochure for confirmation of the plot numbers for this particular house type.

All house type images are for illustrative purposes only and the final building detailing and finishes may vary slightly from what is shown.

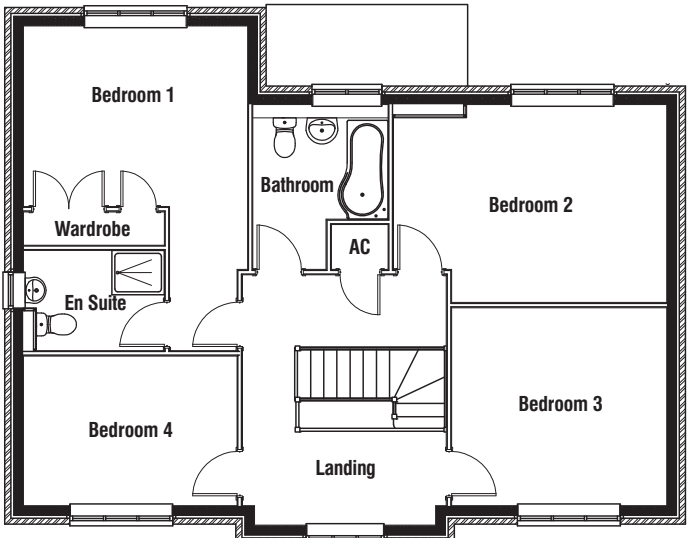
Please see our sales advisors for full site specific details.



Ground floor

Living Room	3.65m x 6.88m	12'0" x 22'7"
Dining Room	3.65m x 3.21m	12'0" x 10'7"
Kitchen/Breakfast Room	5.53m x 4.31m	18'2" x 14'2"
Study	2.76m x 2.06m	9'1" x 6'9"

All measurements shown are approximate maximum room dimensions.



First floor

Bedroom 1	3.84m x 3.09m	12'8" x 10'2"
En Suite	2.50m x 1.71m	8'2" x 5'7"
Bedroom 2	4.69m x 3.42m	15'5" x 11'3"
Bedroom 3	3.69m x 3.36m	12'2" x 11'1"
Bedroom 4	3.66m x 2.56m	12'0" x 8'5"
Bathroom	2.31m x 2.81m	7'7" x 9'3"

Depending on plot number, the floor plans for this house type may be opposite to those shown above.

CONSUMER CODE FOR HOME BUILDERS
www.consumercode.co.uk

Every care has been taken to ensure the accuracy of these particulars but the contents shall not form part of any contract and the vendors reserve the right to alter specification and/or design without notice. Landscaping shown is for illustration purposes only.

2425 (1821) 0617

LarkfleetHomes

www.larkfleethomes.co.uk