

INNOVATION • QUALITY • SUSTAINABILITY



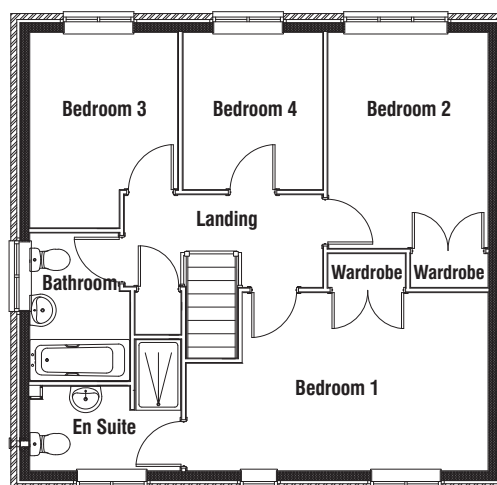
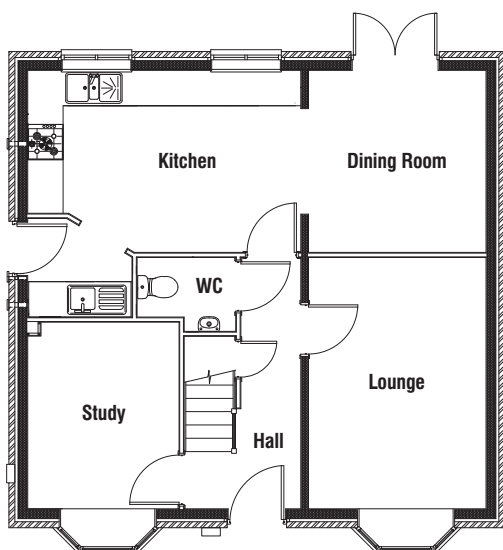
### Solar panels

Solar photovoltaic (PV) panels are fitted as standard on selected Larkfleet properties. Please ask your sales advisor to confirm if solar panels are fitted to the property on the plot number you are interested in.

### Plot numbers

Please refer to the development brochure for confirmation of the plot numbers for this particular house type.

External wall finishes may vary from plot to plot or development to development. Please ask your sales advisor to confirm if the property you are interested in has a brick, stone or rendered external wall finish.



#### Ground floor

Lounge	3.02m x 4.27m	9'11" x 14'0"
Dining Room	3.00m x 3.09m	9'10" x 10'2"
Kitchen	4.64m x 3.09m	15'3" x 10'2"
Study	2.57m x 3.17m	8'5" x 10'5"

All measurements shown are approximate maximum room dimensions.

#### First floor

Bedroom 1	5.13m x 3.03m	16'10" x 9'11"
En Suite	2.57m x 1.44m	8'5" x 4'5"
Bedroom 2	2.72m x 3.67m	8'11" x 12'1"
Bedroom 3	2.51m x 3.32m	8'3" x 10'11"
Bedroom 4	2.38m x 2.67m	7'9" x 8'9"
Bathroom	1.70m x 2.51m	5'7" x 8'2"

Depending on plot number, the floor plans for this house type may be opposite to those shown above.

**CONSUMER  
CODE FOR  
HOME BUILDERS**

[www.consumercode.co.uk](http://www.consumercode.co.uk)

Every care has been taken to ensure the accuracy of these particulars but the contents shall not form part of any contract and the vendors reserve the right to alter specification and/or design without notice. Landscaping shown is for illustration purposes only.

2427 (1272) 0615

**LarkfleetHomes**

[www.larkfleethomes.co.uk](http://www.larkfleethomes.co.uk)