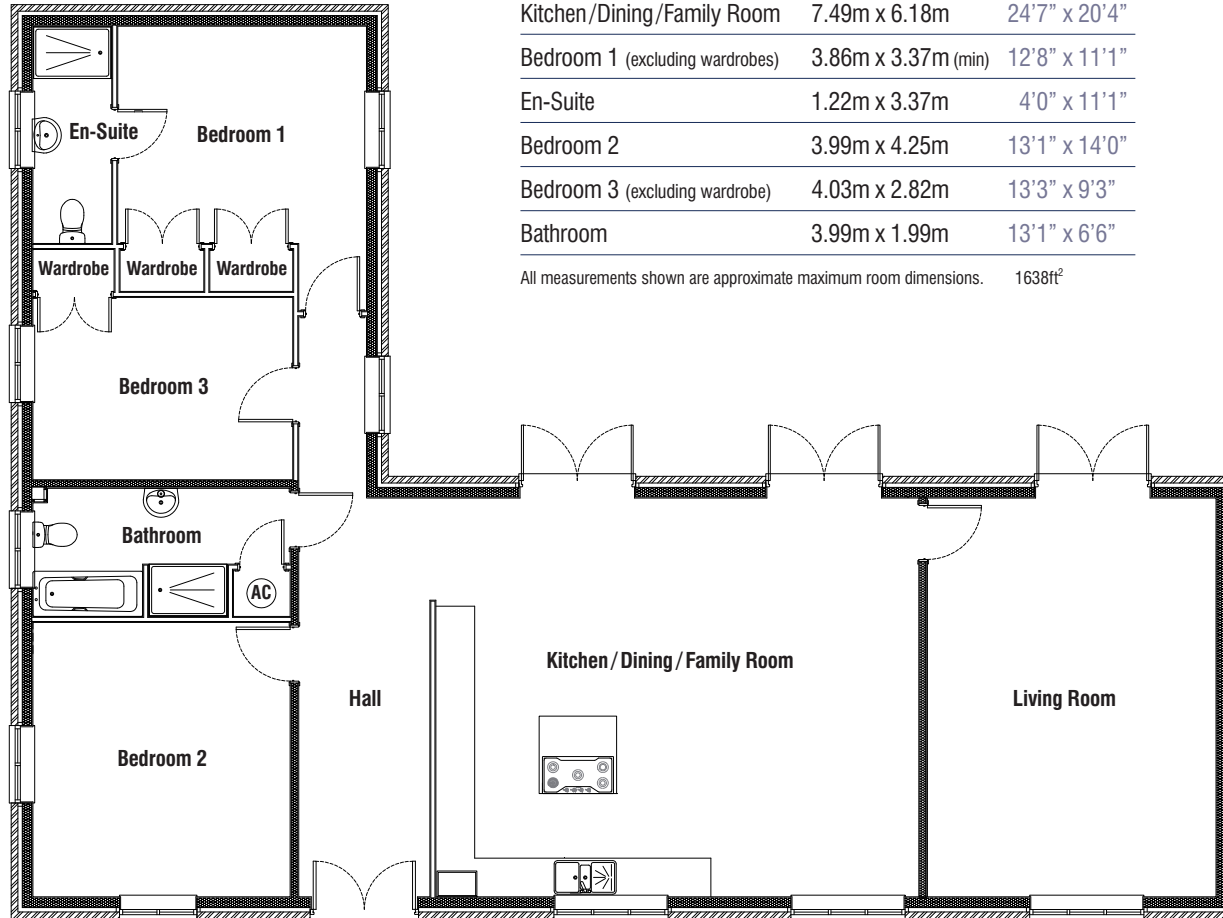


LANGHAM BARNES

MAIN ROAD, BARLEYTHORPE

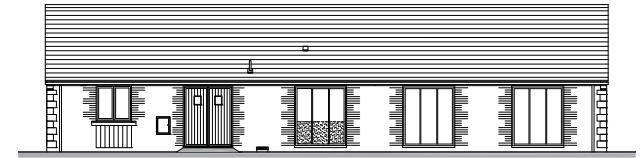


Plot 1

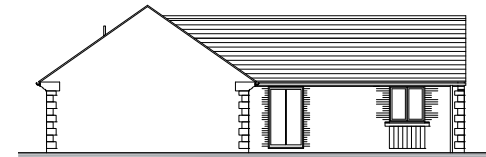


Living Room	4.47m x 6.18m	14'8" x 20'4"
Kitchen/Dining/Family Room	7.49m x 6.18m	24'7" x 20'4"
Bedroom 1 (excluding wardrobes)	3.86m x 3.37m (min)	12'8" x 11'1"
En-Suite	1.22m x 3.37m	4'0" x 11'1"
Bedroom 2	3.99m x 4.25m	13'1" x 14'0"
Bedroom 3 (excluding wardrobe)	4.03m x 2.82m	13'3" x 9'3"
Bathroom	3.99m x 1.99m	13'1" x 6'6"

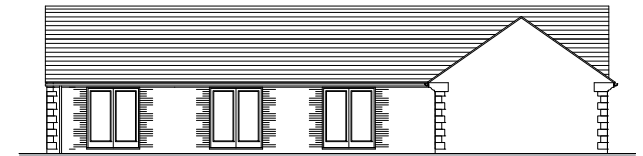
All measurements shown are approximate maximum room dimensions. 1638ft²



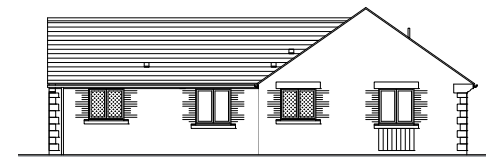
Front elevation



Side elevation



Rear elevation



Side elevation