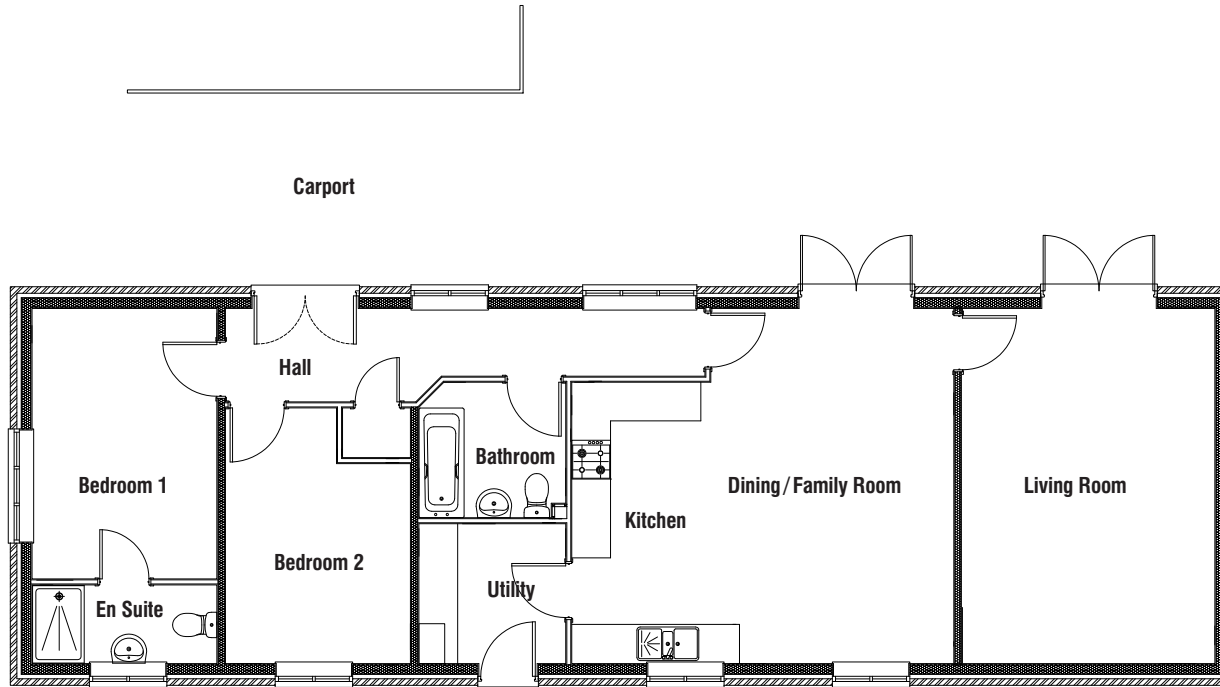


LANGHAM BARNES

MAIN ROAD, BARLEYTHORPE



Plot 4



Living Room	3.77m x 5.51m	12'4" x 18'1"
Dining/Family Room	3.91m x 5.51m	12'10" x 18'1"
Kitchen	2.16m x 4.36m	7'1" x 14'4"
Utility	2.28m x 2.17m	7'6" x 7'1"
Bedroom 1	2.87m x 4.21m	9'5" x 13'10"
En-Suite	2.87m x 1.22m	9'5" x 4'0"
Bedroom 2	2.87m x 3.96m	9'5" x 13'0"
Bathroom	2.28m x 2.10m	7'6" x 6'11"

All measurements shown are approximate maximum room dimensions. 1095ft²

